

GOVERNORS STATE UNIVERSITY



EARLY HEAD START FAMILY DEVELOPMENT CENTER



2022 ANNUAL REPORT

CONTENTS



Letter from the Director.....	1
About the Family Development Center	2
Meet the Early Head Start Team	3
Program Accomplishments	3
Parent Involvement.....	3
Community Engagement.....	3
Funding.....	4

LETTER FROM THE DIRECTOR



In FY2021, the State of Illinois reported a 67% turnover rate for childcare teachers. It is imperative that we in higher education, who understand how educators lay foundational architecture for brain development, advocate for higher teacher pay and benefits in our field to attract and retain a highly motivated workforce for our most vulnerable students.

Erin Soto

Erin Soto
Executive Director
Family Development Center
Governors State University
Home of the Jr. Jaguars
“Here, you are Home”



ABOUT THE FAMILY DEVELOPMENT CENTER

Mission

The mission of the Family Development Center (FDC), a division of Governors State University's College of Education, is to provide accessible and exceptional education for children, families and students and to encourage lifelong learning and the development of the whole child.

Vision

The Family Development Center will be the Model Early Education Center for the South Suburbs.

Our Philosophy

We believe that children learn in many different ways and children's learning is impacted by a variety of forces. When children are actively engaged and construct their own knowledge through hands-on activities in a stimulating environment, their growth and development flourish. We use a research-based, reasoned eclectic approach with Creative Curriculum as our play-based foundation. We honor diversity, creativity and joy in every experience and strive to provide security and emotional support for our children and families.

Facility

The Family Development Center is a Division of the College of Education at Governors State University and was originally established as a charter school in 2003.

The building, nested on campus among native prairie flowers and GSU's esteemed Sculpture Park, is a state-of-the-art facility whose architectural design earned it a position as a Merit Award Finalist from the Chicago Building Congress.

The FDC serves up to 181 children with a \$2.8 M budget, ranking it in the top 15 in budget and size of programs in the country and one of the largest in the state of Illinois. Over this fiscal year, 220 children were served in our program by a total of 50 staff members.

Programs

The Family Development Center is designed to serve the needs of the surrounding community as well as university constituents. The FDC offers full-time care for children aged 12 years of age. In addition to center-based educational care, curriculum and support services are offered to pregnant women and home-based services are provided to families with children up to age two.

Family Development Center programs are supported by grants, donations and private tuition payments from parents. FDC is funded by three major grants: Early Head Start, Preschool for All, and Preschool Expansion.

Early Head Start is a year-round, federally funded program that provides comprehensive education and family support to low-income pregnant women and families with children age birth to three. This program provides 6 hours of center-based care in addition to home-based services with a focus on high-quality comprehensive services to support the whole family. Funding serves 50 children in our center-based program, and 22 in our home-based programs.

At age three, our children may transition to our full day 10-month Preschool for All classrooms or Preschool for All Expansion classrooms. The goal of the Preschool for All program is to provide educational services to all 3- to 5-year-old and focuses on providing high-quality educational programs for children who are determined to be at risk of academic failure. We are funded for 94 children in this program.

Our full-day PreK options blend Preschool For All or Early Head Start grant funding with parent's tuition or state Child Care Assistance Payments to provide wrap around care for 11 hours of high-quality education and care for families that are working or in school full time.

When children turn five, they transition to Kindergarten in their local school districts. The Family Development Center continues to offer before-and-after childcare during the school year for children enrolled in Crete-Monee School District 201-U.

We also offer full day summer camp open for 3-8-year-olds in the summer.

All center-based programs are licensed by the State of Illinois Department of Children and Family Services (DCFS) and are accredited by the National Association for the Education of Young Children (NAEYC). We are also an ExceleRate Gold Level program.

Proud to be in the
Gold Circle of Quality



MEET THE EARLY HEAD START TEAM

Leadership:

Executive Director: Erin Soto

Family Service Director: Jillian Roth

Health, Safety, and Nutrition Services:

Claudia Nguyen

Education, Disabilities and Mental Health Services:

Selene Willard

Center Director: Barb Calibraro

Business Manager: Sharon Palmer

Policy Council:

Chair: Vanessa Guerrero- Home Based EHS

Vice Chair: Mariah Murphy- Center Based EHS

Secretary: Shemika Jefferson- Home Based EHS

Governing Group:

Chair: Shannon Dermer, PH.D

Vice Chair: Catherine Balthazar, PH.D

Secretary: Natalia Ermasova, PH.D,

Tim Harrington, PH.D,

Kelly Chesta, Director, Crete-Monee Early Learning Center

Janet Brewer, J.D., Psy. D.



PROGRAM ACCOMPLISHMENTS

Family Success Corner

One of our GSUEHS moms has been enrolled in the Early Head Start Program since she became pregnant. She has been through many of life's roller coasters, including an extended hospital stay for her child. Mom has been working diligently with the Home Visiting Program and has since graduated from an EMT program while working multiple jobs and establishing housing for her family. She has also diligently participated in Policy Council throughout her enrollment and we're so proud of her accomplishments.

COMMUNITY ENGAGEMENT

Health Advisory Committee

Special thanks to the following members of the Health Advisory Committee for their time and input on health data, self-assessment, under-enrollment and recruitment efforts:

- Kathleen Lynch-Hale- Early Learning Center
- Caren Schranz- GSU Occupational Therapy
- Linda Paschall- FDC Nurse Advisor
- Georgia VanderBoegh- Will County Health Department
- Gia Washington- Sertoma
- Pat Krause- Will County WIC
- Rebecca Deang- Will County Health Department Community Health Educator AOK Network
- Patrick McCarthy- Will County Immunizations

GSU EHS has Memorandum of Agreements with the following agencies:

Social Service:

Anew: Building Beyond Violence and Abuse (formerly South Suburban Family Shelter)
Catholic Charities of Joliet
Grand Prairie Services
Howard Intervention Services
Illinois Action for Children
Illinois Network of Child Care Resource & Referral Agencies
Morning Star Mission
Park Forest Public Library
Prairie State Legal Services
Respond Now
University Park Library
Village of University Park
Workforce Services Division of Will County

Health Services:

Sertoma Centre, Inc.
The Heart That Smiles Dental Clinic and Mobile Unit
Will County Community Health Center
Will County Health Department
Will County- WIC

Education/Disabilities:

Child and Family Connections #12
Child and Family Connections #15
Crete-Monee Early Learning Center
Crete-Monee High School
Steger School District 194

Community Partner Success Story

The Heart that Smiles Mobile Unit visited the Family Development center in March 2022 and July 2022. During the two visits, FDC children were seen by the dental hygienist. Of those 22 children, 8 children were from our Early Head Start program.

FUNDING

BUDGET

FY21 FUNDING	
PROGRAM	TOTAL
Early Head Start (January-December)	\$1,072,185
EHS COVID 19 One-Time Supplement	\$21,451
EHS COVID 19 - ARP	\$86,148
Non Federal Share	\$0
US Department of Agriculture Child and Adult Care Food Program Reimbursement (July-June)	\$54,059
INCCRRA Chld Care Restoration Grant	\$434,896
INCCRRA Quality Improvement Funds	\$8,000
Child Care Workforce Bonus	\$106,500
Illinois Department of Human Services Child Care Subsidies (July-June)	\$344,641
ISBE Preschool for All (July-June)	\$76,071
ISBE Preschool Expansion (July-June)	\$369,880
Total Operating Budget	\$2,573,831

EHS BUDGET		
EARLY HEAD START	BUDGETED	ACTUAL
Personnel Salaries	\$636,646	\$566,421
Fringe Benefits	\$314,950	\$301,182
Travel	\$2,600	\$4,058
Equipment	\$0	\$0
Supplies	\$21,684	\$72,122
Other	\$38,128	\$64,588
Indirect Costs	\$58,177	\$53,011
Total	\$1,072,185	\$1,061,382
Food Program income	\$25,748	\$25,748

DEMOGRAPHIC BREAKDOWN OF FAMILIES AND CHILDREN

Single parent	Foster parent	Homeless	Two-Parent
77	0	1	10

Bi-racial	African American	Caucasian	Asian	Hispanic
8	56	6	0	17

WIC	Food Stamps	Cumulative Number of Children Served	Early Head Start
37	38		87

ACTUAL EARLY HEAD START AVERAGE MONTHLY ENROLLMENT

QUARTER 1	QUARTER 2	QUARTER 3	QUARTER 4
Jan – 36	April – 42	July – 41	Oct – 39
Feb – 35	May – 46	Aug – 36	Nov – 39
March – 42	June – 46	Sept – 39	Dec – 38

626 / 864 = 72% Average Monthly Attendance

PERCENTAGE OF ELIGIBLE EARLY HEAD START CHILDREN SERVED

According to latest IECAM data available, there were a total of 1,564 children under age three in the GSUEHS service delivery area. Of these children, 146 met poverty guidelines. GSUEHS served 87 children or 59% of eligible children in the service delivery area.

NUMBER OF CHILDREN WITH DISABILITIES IN PIR FOR 2021-2022

Early Head Start
8

MEDICAL INFORMATION ON EHS CHILDREN ENROLLED MORE THAN 45 DAYS.

Indicator	2021 Data
Children with health insurance at end of year	100%
Number of children with an ongoing source of health care at the end of the year	99%
Number of children who are up to date on a schedule of age appropriate preventive and well-baby care according to Illinois EPSDT schedule	96%
Number of children who are up to date on all immunizations/all possible immunizations	100%

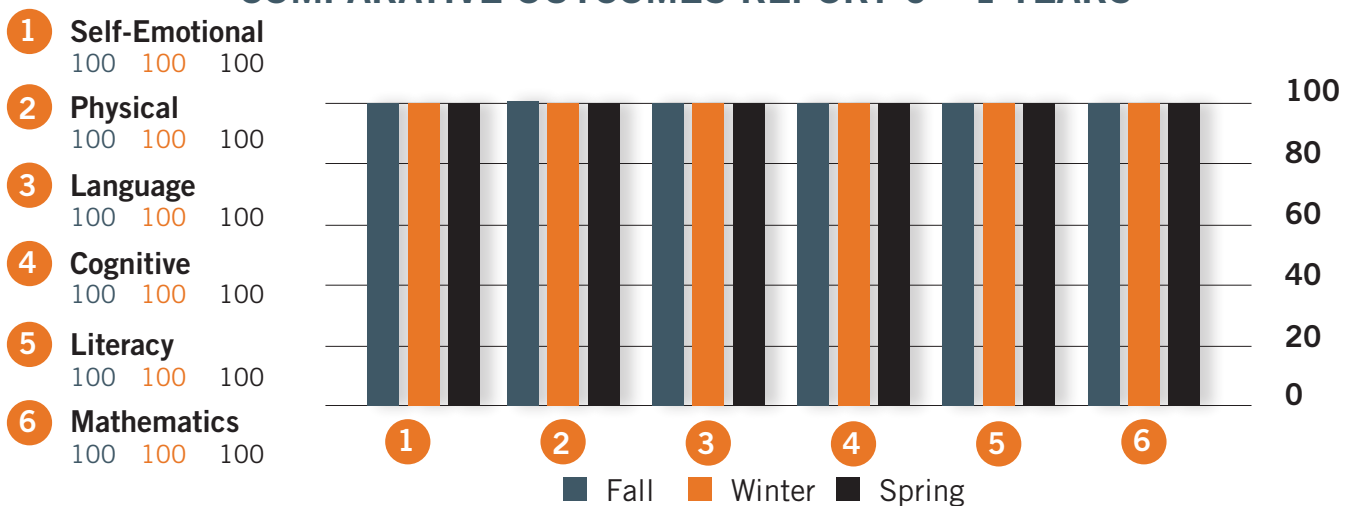


PREPARATION FOR KINDERGARTEN READINESS

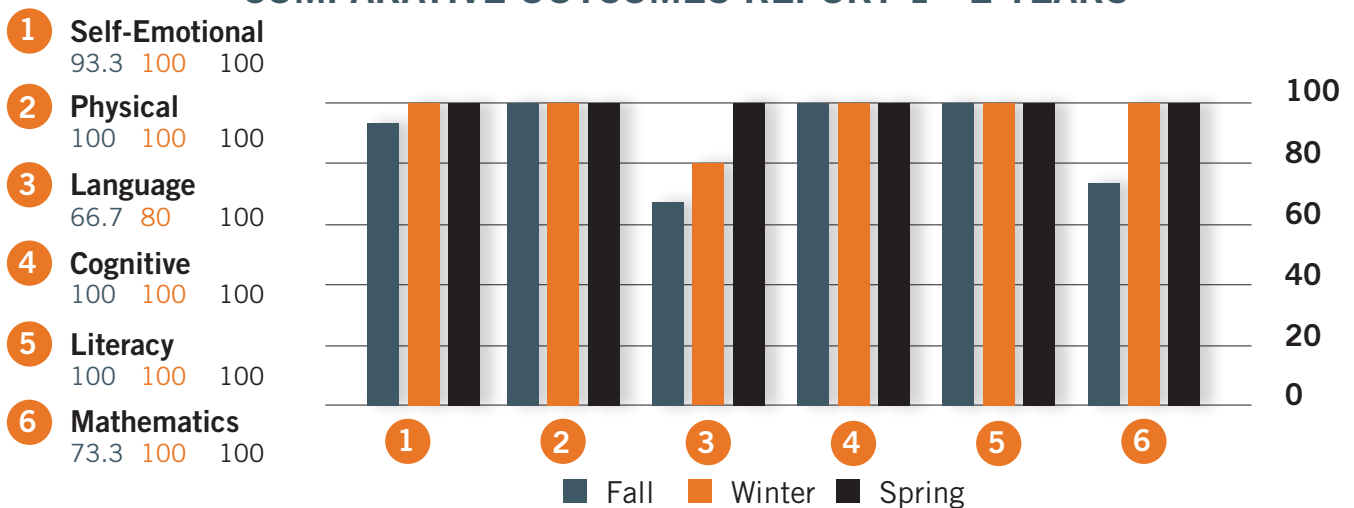
2020-2021 Early Head Start School Readiness Outcomes Data

FDC uses Teaching Strategies Gold as its formal child assessment system. Observations are recorded into the system and children’s levels of development are assessed and compared to widely held expectations for their age group. Assessments are held three times a year in the Fall, Winter and Spring, called checkpoints. The following data represents children who attended for all three checkpoints. A goal for EHS is that 80% of children enrolled will meet or exceed widely held expectations by the end of the program year. For children ages 0-1 this generally means that they are meeting their developmental milestones. At age two, more emphasis is on literacy and mathematical skills. 100% of the children in this report met the 80% benchmark by the end of the program year.

COMPARATIVE OUTCOMES REPORT 0 – 1 YEARS



COMPARATIVE OUTCOMES REPORT 1 - 2 YEARS



COMPARATIVE OUTCOMES REPORT 2 – 3 YEARS

1 Self-Emotional

73 88 88

2 Physical

100 91 88

3 Language

67 75 88

4 Cognitive

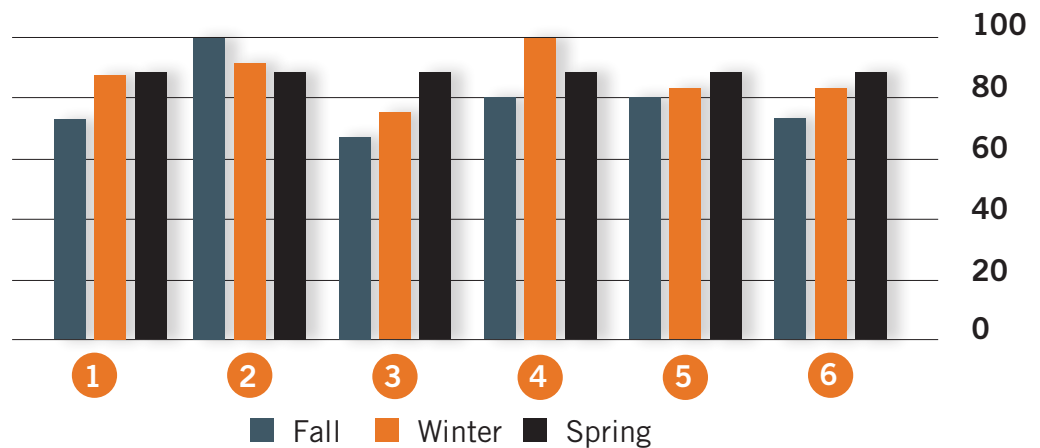
80 100 88

5 Literacy

80 83 88

6 Mathematics

73 83 88



AUDITS

- GSU EHS received a FA1 Monitoring Review in 2020. The result of the review was that GSU EHS was found out of compliance due to under-enrollment.
- Copies of the Compliance and Financial Audit Reports can be found on the Illinois General Auditor Page: <https://www.auditor.illinois.gov/Audit-Reports/GOVERNORS-STATE-UNIVERSITY.asp>
EHS received no findings in FY21



Governors State

UNIVERSITY